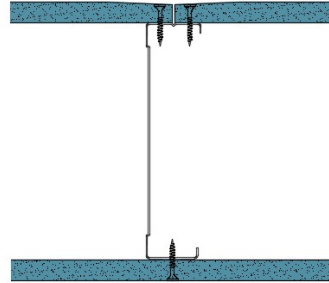


146-S-53 - SPEEDLINE System Data Sheet - Version V1 (24-10-23)

SPEEDLINE 146mm 'C' Stud Partition @600mm
Ctrs, with Siniat GTEC 12.5mm dB Board each side



System Performance Breakdown

Fire Resistance:

BS476 Part 22:1987:

Test Ref & Date or Applied Ref & Report:

Max Height:

Thickness:

Duty Grade: BS 5234: Part 2:1992:

Sound Insulation:

30/30 Minutes (Integrity/Insulation).

BRE 269826 - BRE Report P102396-1011C

Refer to Speedline Specification Clause

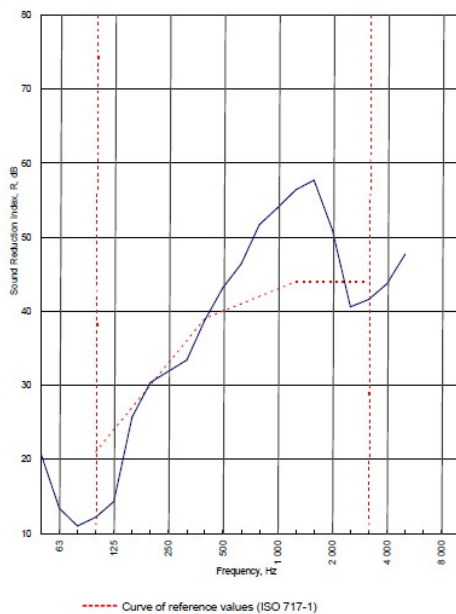
173 mm. (At Base Track, Excluding Finishes)

Medium - Annexes A-F

40 $R_{w,dB}$, Date Tested or Assessed Against - 70-S-53

Test Code:
H17509AA
Test Date:
29/07/2011

Freq. Hz	R dB
50	20.7
63	13.4
80	11.0
100	12.2
125	14.3
160	25.7
200	30.4
250	31.9
315	33.4
400	38.8
500	43.2
630	46.4
800	51.7
1000	54.0
1250	56.4
1600	57.7
2000	51.0
2500	40.6
3150	41.6
4000	43.7
5000	47.7
6300	
8000	
10000	



Rating according to BS EN ISO 717-1:1997	$R_w (C;Ctr) = 40 (-4;-10) \text{ dB}$		
Evaluation based on laboratory measurement results obtained by an engineering method:	$C_{50-3150} = -5 \text{ dB}$	$C_{50-5000} = -4 \text{ dB}$	$C_{100-5000} = -3 \text{ dB}$
	$C_{125-3150} = -13 \text{ dB}$	$C_{125-5000} = -13 \text{ dB}$	$C_{125-10000} = -10 \text{ dB}$

TESTED AT ONE OF THE UKAS ACCREDITED LABORATORIES BELOW

- B.T.C (H-Ref on Graph)
- B.R.E
- AIRO
- S.R.L

Customer: Metsec plc Hepsec Division

BTC 17509A: Page 8 of 10

